

## Hiking trail

GPS coordinates (WGS84):  
Start/Finish  
N63 21.569 E21 18.009

Bodvattnet  
Korsholm  
OSTROBOTHNIA



October 2014

## Bodvattnet Trail 4 km

*The Bodvattnet Nature Trail can be accessed from the seaside road, with the boat piers and boathouses in the harbour to your right. The first part of the trail runs through Bodback, which is also a populated residential area. Back in the 1920s, Bodback was Björkö's most important fishing and shipping harbour with about a hundred boathouses. In Bodback, there are monuments to the postal delivery service and the march of the Russian army across Kvarken during the Finnish War (1808-1809). While climbing the hill at Bodback, you can admire the old picturesque grey storehouses and boathouses by the waterfront. Along the trail you may also spot Highland cattle on the pasture.*

**Trail rating:** Medium

**Suitability:** The trail is a suitable day trip destination for both novice and more seasoned hikers, and for children and adults alike. The beginning (1 km) and end (800 m) of the trail are easy to walk and also suitable for those with pushchairs.

**Duration:** 2–3 hours

**Trail markings:** There is an information board at the trail's starting point. The trail is clearly marked with 'Bodvattnet runt' signposts that have a nature trail sign and a blue sign on them. The blue markings will guide visitors at smaller trail crossroads.

### 3 Facts

- Unesco World Heritage Site
- Bodback museum site
- Unique views opening up from the observation tower

### Getting to the trail

Svedjehamn parking area  
Björköntie 1008  
65870 Björköby (Korsholm)

The Bodvattnet Trail first runs along the longer Björkö-Panike Trail, but branches off to the left about 250 m from the parking area.

## Trail description

The trail runs round Bodvattnet, a former sea gulf turned lake. It winds through a varied landscape shaped by land uplift and crosses several moraine ridges. The dominant tree species are those typical of a seaside area: alder, birch, aspen and juniper. Right by the sea you may spot sea buckthorn bushes. Further away from the shore you will find an ordinary mixed forest.

More than a hundred bird species nest in the Svedjehamn and Bodvattnet area, including all of the most common gull and tern species nesting in Finland.

The campfire site is located on the shore of Svartbådavattnet, which is slowly turning into a flad; flads are bays that have been virtually cut off from the sea due to land uplift but are still just about in contact with it through one or more inlets.

On the latter part of the trail you will find Saltkaret, an observation tower rising about 20 metres above sea level that attracts some 25,000 visitors every year. The unique scenery opening out from the tower across the sea is characterised by parallel moraine ridges (De Geer moraines) created during the Ice Age, running from the north-east to the south-west, and now forming oblong bays or long, narrow islands. You will find a rest spot and toilets at the foot of the tower. Café Salteriet, in the Svedjehamn harbour, serves summertime visitors.

## Level of difficulty

The Bodvattnet Trail runs in varied terrain along shoreline roads, forest paths, village roads and seashore trails. Duckboards will help you cross the wet sections. The trail is very easy to walk from the Svedjehamn parking area to Bodback, and also from the observation tower to Svedjehamn.

The trail is more challenging between Bodback and the observation tower because there are some rocky and root-filled sections in that area. There is some variation in altitude along the trail, but virtually no steep ascents. You will safely negotiate even the most difficult parts by walking slowly. The trail is clearly signposted. There are four rest spots along the trail.

## Good to know

Parking in the car park is subject to a fee, but the rate is reasonable.

You can wear your trainers and normal outdoor clothing. In sections with a lot of rocks and roots, please walk carefully.

There is no organised waste management along the trail, so take a plastic bag with you. This way, you will be able to take away everything that you bring with you.

Part of the Bodvattnet Trail belongs to the longer Björkö-Panike Trail.

## Trail facilities

Parking area, two dry toilets at the start; information boards, rest spots, a campfire site with a firewood shed, observation tower, one usual and one accessible dry toilet along the trail.

## Tourist information

### [Visit Vaasa Tourist Office](#)

Raastuvankatu 30  
65100 Vaasa  
☎ +358 6 325 1145  
visit.vaasa (at) visitvaasa.fi

### [Kvarkens Customer Service](#)

☎ +358 50 346 6200  
info (at) merenkurkku.fi

### [Terranova Kvarken Nature Center](#)

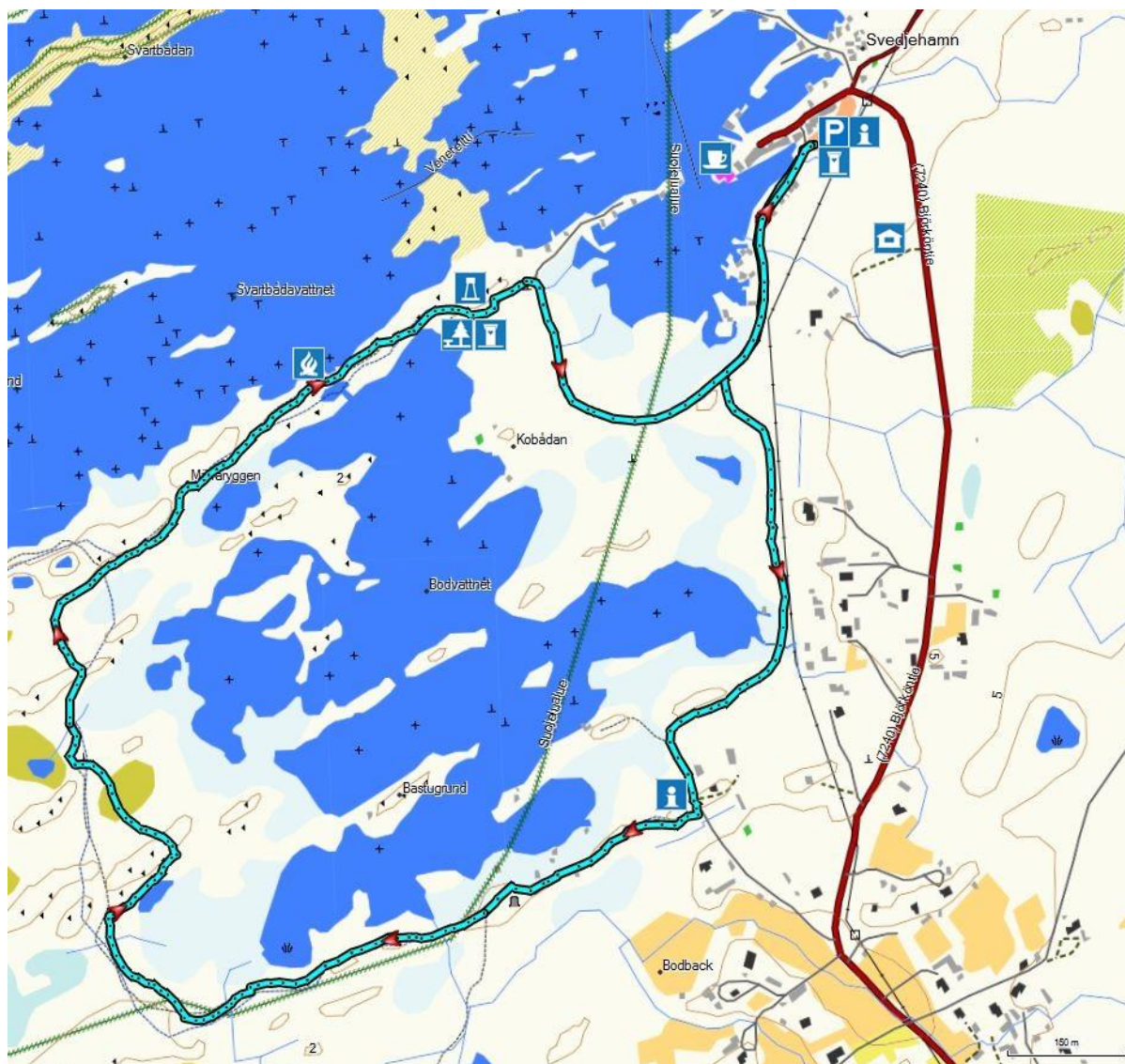
Museokatu 3  
65100 Vaasa  
Contact: Ostrobothnian Museum  
☎ +358 6 325 3800  
terranova (at) vaasa.fi

### [Havets Hus](#) (open June–August)

Raippaluodontie 22  
65800 Raippaluoto  
☎ +358 50 378 5988  
info (at) mertentalo.fi



## Trail map: Bodvattnet Trail 4 km, Korsholm, Finland



MTK Map, compiled by [Teemu Peltonen](#), is licensed under the [Creative Commons Attribution-NonCommercial-NoDerivs 3.0 Unported Licence](#). The maps have been created by using the material provided by the Topographic Database of the National Land Survey of Finland, extracted on 17.12.2013, [licence](#).

Copyright of the data brought from OpenStreetMap stays with the OpenStreetMap contributors. [Licence](#).

The signs complying with standard SFS 4424 have been published with the permission of the Finnish Standards Association SFS.

[www.visitpohjanmaa.fi](http://www.visitpohjanmaa.fi)