



# HIKING TRAIL

## Kuninkaanpolku | Soini, South Ostrobothnia



Hätännumero  
**112**

Kuvat: Ismo Nousiainen

## Kuninkaanpolku 10.0 km | Soini

*Kuninkaanpolku is located in the terrain between the centre of Soini and the Vuorenmaa ski centre. Offering a combination of wilderness, peace, challenges and even some thrill, this trail first leads to the top of the Vuorenmaa Hill, with a grand view of the surrounding landscape. After that, it descends into a river valley, where it follows the winding river, ascending every now and then to the surrounding heaths. The trail also passes through work sites of beavers, and so hikers may occasionally need to find their way across or under some fallen trees. There are four rest spots along the trail.*

### TO THE STARTING POINT OF THE TRAIL

#### Starting point 1

##### Upper parking area of the Vuorenmaa ski centre

Koskitie 25, 63800 Soini

(WGS84) [N62 56.099 E24 10.014](#)

From Vuorenmaantie Road, turn into Koskitie Road, and follow it about 100 m. At the signpost to Hiihtokeskus, turn right. Drive up the gravel road about 400 m until you arrive at the parking area. The starting gate is on the left.

#### Starting point 2

##### Starting or end point in Soini

Murtokankaantie 3, 63800 Soini

[62°52'47.7"N 24°12'50.4"E](#)

By Karstulantie Road, there is a signpost to the starting point of the trail.

### OTHER INFORMATION

The trail can be walked in both directions. The recommended direction is from north to south, or from Vuorenmaa to Soini. The best landscapes are at the beginning of the trail.

**DEGREE OF CHALLENGE:** Intermediate

**TRAIL TYPE:** Line segment

**SUITABILITY:** Suitable for people in good condition accustomed to hiking in nature. Includes some elevation variations.

**DURATION:** ca 3–5 h in one direction, there and back 10 h (20 km)

**SIGNPOSTING:** The trail is clearly marked with dots of red paint on trees and poles. The junctions are signposted. The trail is equipped with signs showing the walked kilometres, such as KP1, KP2, etc.



◇ Several rest stops with woodsheds

◇ Beaver work sites by the river

◇ River canyons with ascents and descents

Services at the beginning of or along the trail



#outdoorsepp #kuninkaanpolku #soini #southostrobothnia #hiking





# HIKING TRAIL

## Kuninkaanpolku | Soini, South Ostrobothnia



### TRAIL DESCRIPTION

Kuninkaanpolku is a 10-km line segment trail. It passes through a variable terrain along forest paths, jogging tracks, roads, riverside paths, small bridges and forest roads. The trail ascends every now and then from the river bank to the heath forest around to return again and again to the riverside. The trail is suitable for people in good condition who are accustomed to hiking in nature.

The trail has two lean-tos and four campfire sites. In Vuorenmaa, the first lean-to is at 0.2 km from the start of the trail. The second lean-to and a toilet are at 2.8 km. The campfire sites and lean-tos are equipped with firewood.

### DEGREE OF CHALLENGE

The riverbanks are rather steep. The trail also includes some uneven or rocky sections and by the riverside there are fallen trees that you must cross, go under or around. The trail is occasionally very slanted and slippery by the waterside. The most difficult section is the wet and – because of forest machines – very uneven spot before you cross Möksyntie Road.

That leg is not signposted. Otherwise, the trail is clearly marked with dots of red paint on trees and poles. The junctions are signposted. The trail is equipped with signs indicating the walked kilometres, such as KP1, KP2, etc.

### GOOD TO KNOW

In spring, during the flood season, the trail may partly be covered by water at the beginning of the riverside leg. Otherwise, the trail is passable when the ground is unfrozen. You should wear full-length trousers and long-sleeved outdoor clothing, as well as waterproof hiking boots. During rainy and cold weather, the stairs and bridges may be slippery.

The Leave No Trace policy is followed in the area, which means everyone takes their own rubbish away. As a rule, mobile phones have good coverage in the area. A hiker's experiences with the trail: <http://bit.ly/kuninkaanpolku>

The northernmost starting point of the Arpainen hiking trail is at 3 km from the end point of Kuninkaanpolku, in the Lauttonen recreation area. The Arpainen hiking trail is part of European long-distance paths (E6). [www.soini.fi/node/123](http://www.soini.fi/node/123)





# HIKING TRAIL

## Kuninkaanpolku | Soini, South Ostrobothnia



### SERVICES FOR THE TOURIST AND TOURIST INFORMATION

#### Distances to the neighbouring municipalities and centres

Soini 11 km, Lehtimäki 26 km, Alajärvi 25 km, Ähtäri 55 km, Tuuri 55 km, Kuortane 50 km

#### Read about the tourism services in the area

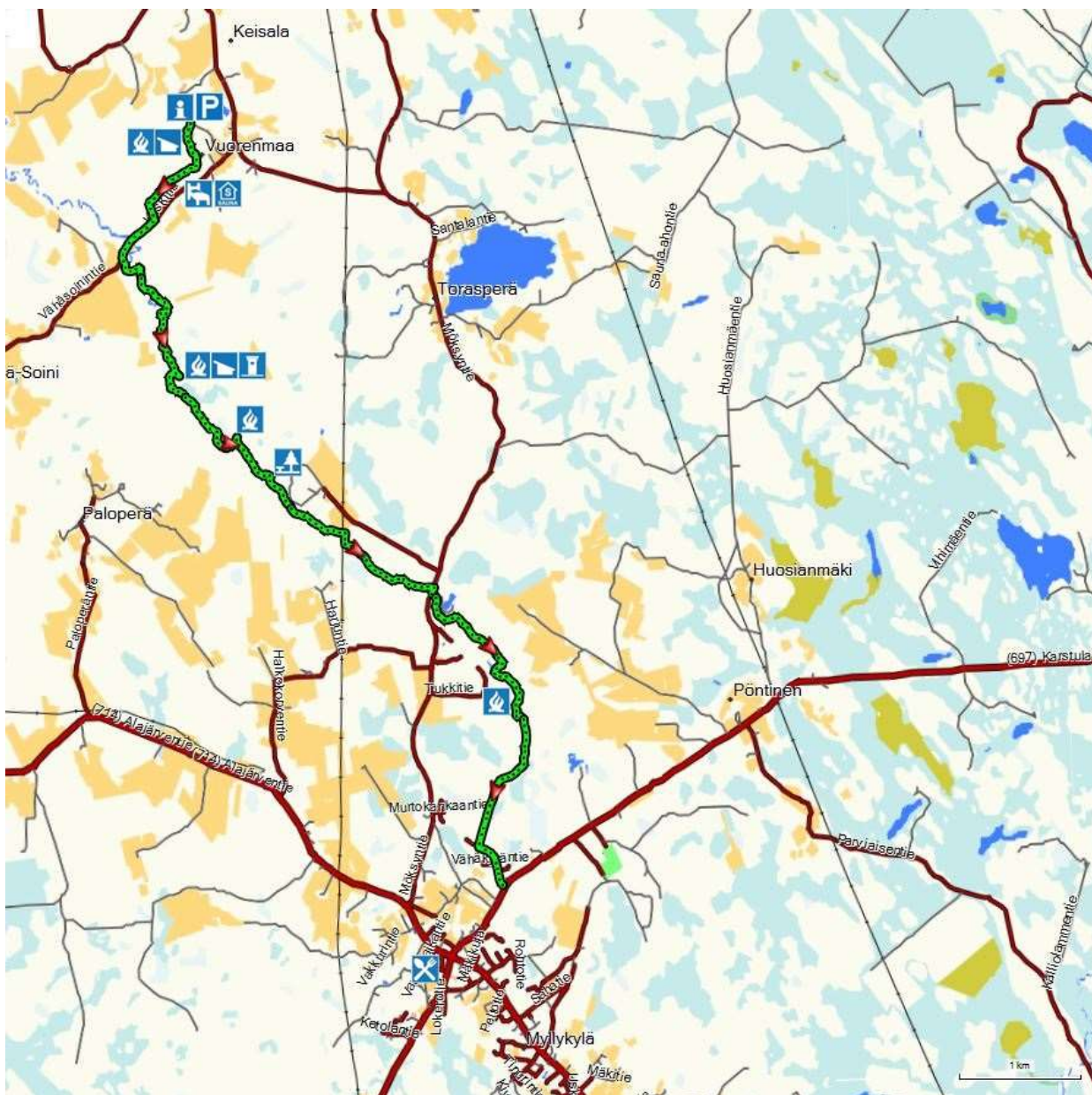
[www.epmatkailu.fi](http://www.epmatkailu.fi)

[www.soini.fi](http://www.soini.fi)

[www.kuortane.com](http://www.kuortane.com)

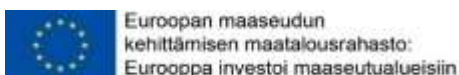
[www.ahtarizoo.fi](http://www.ahtarizoo.fi)

### MAP



MTK Map, compiled by Teemu Peltonen, is licensed under the [Creative Commons Attribution-NonCommercial-NoDerivs 3.0 Unported Licence](https://creativecommons.org/licenses/by/4.0/). The maps have been created by using the datasets provided by the National Land Survey of Finland, extracted on 17.12.2013. [licence](https://creativecommons.org/licenses/by/4.0/). Copyright of the data taken from OpenStreetMap remains with the OpenStreetMap contributors. [Licence](https://creativecommons.org/licenses/by/4.0/). The signs complying with standard SFS 4424 have been published with the permission of the Finnish Standards Association SFS.

Electronic description of the trail and GPS trail file downloadable, e.g., to a smartphone: [www.visitpohjanmaa.fi/kuninkaanpolku](http://www.visitpohjanmaa.fi/kuninkaanpolku)



#outdoorsep #kuninkaanpolku #soini #southostrobothnia #hiking